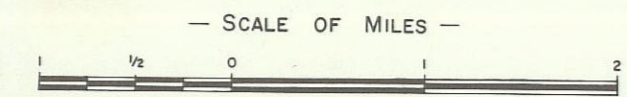


ROSEWOOD-WALLOON COALFIELD GEOLOGICAL MAP



Reference

QUATERNARY	Qa	Alluvial clay, sand, gravel.
	CAINOZOIC	
TERTIARY	Tb	Basalt
	Ts	Mudstone, sandstone, pebble and boulder conglomerate, magnesian limestone.
MESOZOIC	Jmw	Shale, siltstone, fine to medium-grained argillaceous and calcareous sandstone, cone-in-cone limestone, clay ironstone, coal seams.
	Jlm	Shale, siltstone, fine to medium-grained argillaceous and calcareous sandstone, coarse-grained pebbly quartzose sandstone, pebble conglomerate, cone-in-cone limestone, clay ironstone.
	Jlb	Sandstone

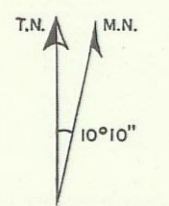
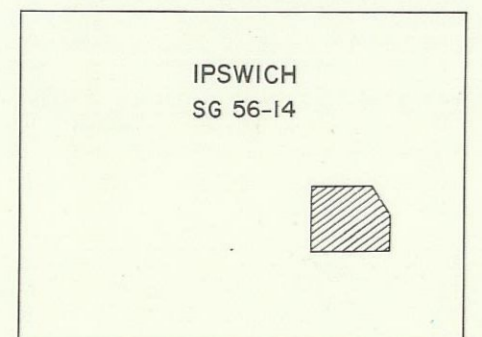
Top and bottom of coal bearing beds of Walloon Coal Measures shown:

- ∇ Type section locality
- Geological boundary
- ▲ Fault
- ⊕ Synclinal axis
- ⊖ Anticlinal axis

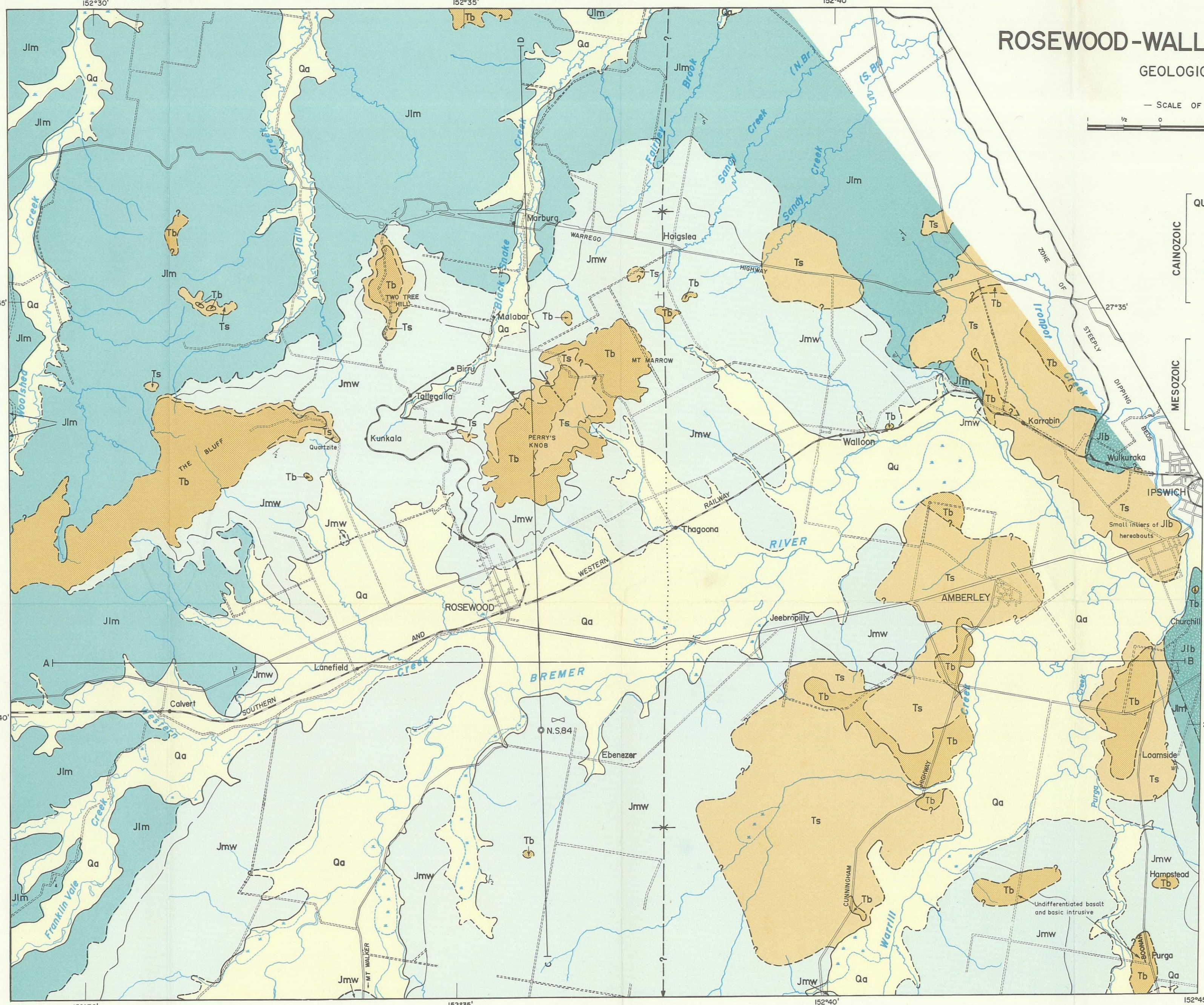
Where location of boundaries, faults and fold axes is approximate, line is broken; where inferred, queried, where concealed, boundaries and fold axes are dotted, faults are shown by short dashes.

- ↘ Strike and dip of strata
- ⊕ Horizontal strata
- ⊗ Strike of vertical strata
- A-B Section line
- ⊙ Diamond drillhole
- Main road
- Secondary road
- +— Railway line with station
- ☁ Swamp

KEY TO 1:250,000 SERIES



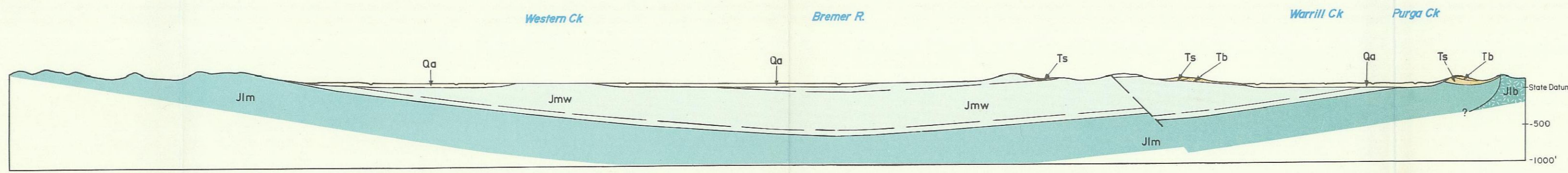
Drawn by the Coal Section G.S.O., Redbank
Colour separation by Drafting Branch,
Department of Mines
Printed by S.G.Reid, Government Printer



Section C-D
Scale V_H=4

N.S.84 Bremer R

Section A-B
Scale V_H=4



C

A

B